



# **CONSTRUCTION MATERIALS**

---

## **TECHNOLOGIES**

**Caution:**

The installation used for these product approvals are in accordance with the installation specifications listed at [www.sealedstuccosystem.com](http://www.sealedstuccosystem.com) and the installers of this system must be a Sealed Stucco Technician listed as current on the website.

### **WIND RESISTANCE EVALUATION OF THE KONING EXTERIOR FINISH ASSEMBLY IN ACCORDANCE WITH ASTM E 330 (PROJECT NO. KCCI-002-02-03)**

For

**KONING CONSTRUCTION CONSULTANTS  
8301 JOLIET STREET  
HUDSON, FL 34667**

**APRIL 4, 2016**

**Purpose:** Evaluate the Koning Exterior Finish Assembly for wind resistance in accordance with **ASTM E 330: *Standard Test Method for Structural Performance of Exterior Windows, Doors, Skylights and Curtain Walls by Uniform Static Air Pressure Difference.***

**Test Methods:** Testing was conducted in accordance with ASTM E 330-02(2010): *Standard Test Method for Structural Performance of Exterior Windows, Doors, Skylights and Curtain Walls by Uniform Static Air Pressure Difference.* Specimens were tested in accordance with Procedure A. The selected test load was  $\pm 150$  psf, which equates to a  $\pm 225$  psf proof load when the typical 1.5 factor of safety is applied to the test result. The following sequence was used to evaluate the specimen:

1. -75 psf was applied for 10 seconds
2. Specimen was recovered for 1-5 minutes
3. -150 psf was applied for 10 seconds
4. Specimen was recovered for 1-5 minutes
5. +75 psf was applied for 10 seconds
6. Specimen was recovered for 1-5 minutes
7. +50 psf was applied for 10 seconds
8. Specimen was recovered for 1-5 minutes
9. -112.5 psf was applied for 10 seconds
10. Specimen was recovered for 1-5 minutes
11. -225 psf was applied for 10 seconds
12. Specimen was recovered for 1-5 minutes
13. +112.5 psf was applied for 10 seconds
14. Specimen was recovered for 1-5 minutes
15. +225 psf was applied for 10 seconds
16. Specimen was recovered for 1-5 minutes

**Sampling:** All products applied to the exterior sheathing were provided by Koning Construction Consultants. Below is an itemized list of products that are used in the Koning Exterior Finish Assembly.

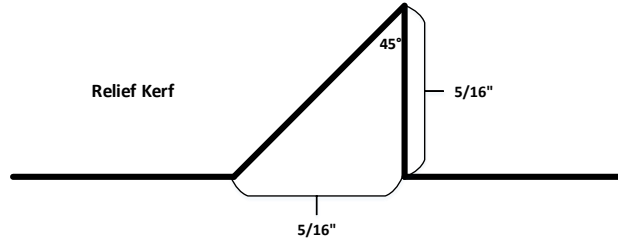
<u>Product Identification</u>	<u>Manufacturer</u>
Tyvek® HomeWrap	DuPont
Vinyl Casing Bead	Not provided
Structalath Twin Trac	Structa Wire Corporation
Florida Super Stucco	Argos Cement LLC
MasterSeal NP 150	BASF Corp.

**Specimen:** A 4-ft x 8-ft mock-up was constructed from No.2 2x6 dimensional lumber and sheathed with 7/16" OSB. The OSB sheathing was installed with two (2) offset vertical joints and one horizontal joint and was fastened to the framing with #8 x 2 wood screws spaced 6" o.c. along the edges and intermediate supports. DuPont Tyvek® HomeWrap was placed over the OSB using 1-1/2" plastic cap nails spaced 24" o.c. 5/8" ground x 1-3/4" flange, vinyl casing beads were located around perimeter of the specimen and attached 24" o.c with #8 x 1" PH wood screws. Structalath Twin Trac was secured through to the sheathing with #8 x 1" PH screws spaced 12" o.c. horizontally and 5" o.c vertically in a staggered pattern. The stucco finish was prepared by mixing Florida Super Stucco and

KCCI-002-02-03      PRI-CMT Accreditations: IAS TL-189; Miami-Dade 14-1215.01; State of Florida TST5878; CRRC

The test results, opinions, or interpretations are based on the material supplied by the client. This report is for the exclusive use of stated client. No reproduction or facsimile in any form can be made without the client's permission. This report shall not be reproduced except in full without the written approval of this laboratory. PRI Construction Materials Technologies LLC assumes no responsibility nor makes a performance or warranty statement for this material or products and processes containing this material in connection with this report.

sand at a 1:3 to 1:4 ratio and applied flush with the casing bead. A relief kerf, as shows below, was cut into the wet stucco at the casing bead. MasterSeal NP 150 was applied in the kerf to seal to the trim.



**Results:**

The specimen was tested January 29, 2016. Results of testing are shown below.

**Table 1. Results from ASTM E 330, Procedure A**

Pressure (psf)	Duration (s)	Result (Pass/Fail)
-75	10	Pass
0	60	Pass
-150	10	Pass
0	60	Pass
+75	10	Pass
0	60	Pass
+150	10	Pass
0	60	Pass
-112.5	10	Pass
0	60	Pass
-225	10	Pass
0	60	Pass
+112.5	10	Pass
0	60	Pass
+225	10	Pass
0	60	Pass

Note(s): Deflection measurements were not evaluated.

**Statement of Attestation:**

The performance evaluation of Koning Exterior Finish Assembly was conducted in accordance with ASTM E 330-02(2010): *Standard Test Method for Structural Performance of Exterior Windows, Doors, Skylights and Curtain Walls by Uniform Static Air Pressure Difference* as described herein. The laboratory test results presented in this report are representative of the material supplied.

Signed:   
Zachary Priest, P.E.  
Director

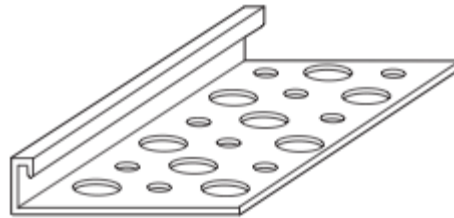
**Report Issue History:**

Issue #	Date	Pages	Revision Description (if applicable)
Original	04/04/2016	13	NA

**APPENDIX FOLLOWS**

KCCI-002-02-03 PRI-CMT Accreditations: IAS TL-189; Miami-Dade 14-1215.01; State of Florida TST5878; CRRC

The test results, opinions, or interpretations are based on the material supplied by the client. This report is for the exclusive use of stated client. No reproduction or facsimile in any form can be made without the client's permission. This report shall not be reproduced except in full without the written approval of this laboratory. PRI Construction Materials Technologies LLC assumes no responsibility nor makes a performance or warranty statement for this material or products and processes containing this material in connection with this report.




**Vinyl Casing Bead**

KCCI-002-02-03 \_\_\_\_\_ PRI-CMT Accreditations: IAS TL-189; Miami-Dade 14-1215.01; State of Florida TST5878; CRRC

The test results, opinions, or interpretations are based on the material supplied by the client. This report is for the exclusive use of stated client. No reproduction or facsimile in any form can be made without the client's permission. This report shall not be reproduced except in full without the written approval of this laboratory. PRI Construction Materials Technologies LLC assumes no responsibility nor makes a performance or warranty statement for this material or products and processes containing this material in connection with this report.

**INTRODUCING**

 **STRUCTA LATH**<sup>®</sup>

**1 1/2" SF CR TWIN TRAC**


**Another natural innovation from Structa Wire Corp.  
We've made our product even better!**

- ▶ **Twin Trac** simplifies the attachment of wire lath to wood and steel studs for residential and commercial construction.
- ▶ **Twin Trac** provides convenient options for attachment of the lath that exceed all building code requirements.

**Features**

- ▶ **Twin Trac** in rolls (compared to sheet) provides the most economical and cost effective metal base (wire lath) for 3 coat stucco on commercial buildings.
- ▶ **Twin Trac** creates a series of (8)-3/16" spacing bands which act as a continuous washer. This allows the easy penetration of self-tapping screws or hand nails, providing a wide flat base for automatic staples.
- ▶ **Twin Trac** flat wires provide a pressure seal at the fastener penetration point that serves to inhibit water leakage.
- ▶ **Twin Trac** secures and protects asphalt building paper from punctures.
- ▶ **Twin Trac** at a 38 3/8" width and 150' length requires 50% less side and end laps on average (compared to 27" x 101" metal lath sheets). This reduces overlaps which create weak points and are a significant source of shrinkage cracking.
- ▶ **Twin Trac** utilizes our cold rolled flat wire exclusively for longitudinal wires which provides greater tensile strength and additional surface area for keying purposes.
- ▶ Worker friendly **Twin Trac** unwinds from roll into the flat without curvature memory.

**StructaLath provides a minimum of  
28 (rugged) furring points per square foot that ensure  
superior embedment and crack resistance.**

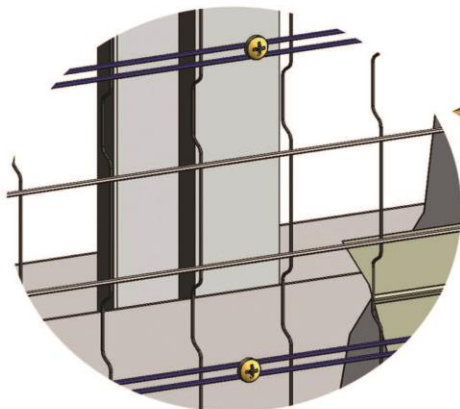
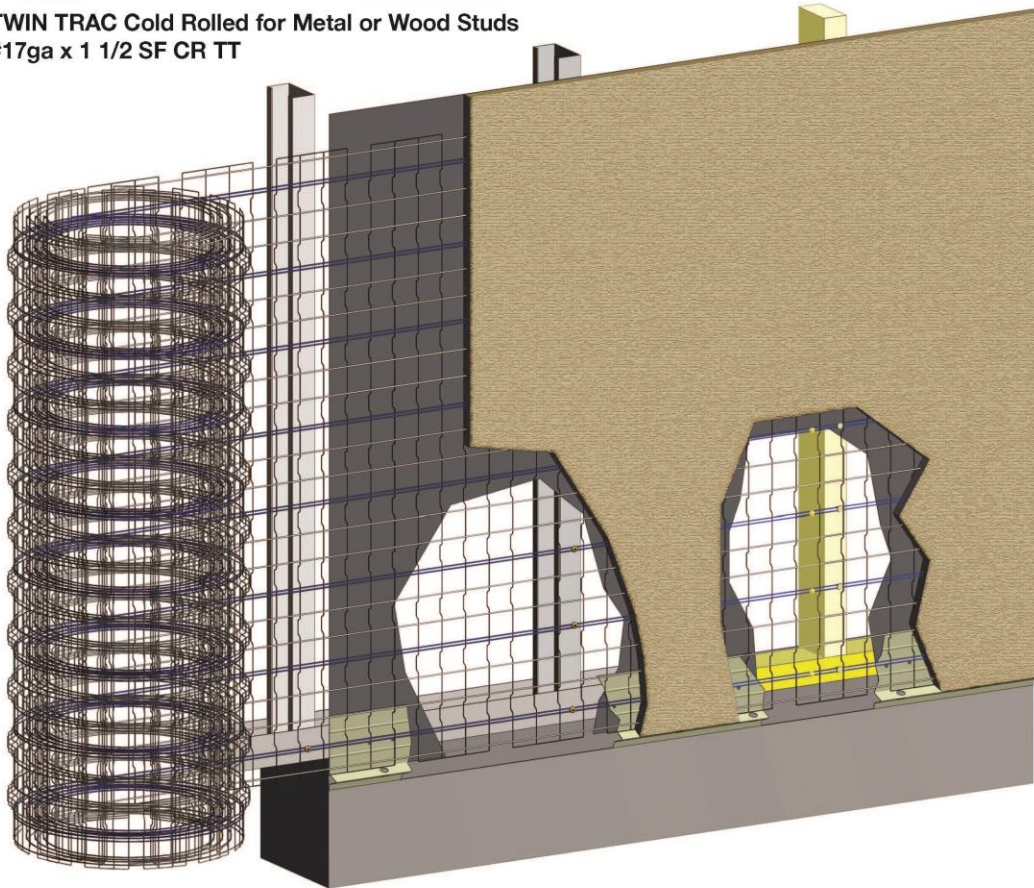
 **Structa Wire Corp.**, Vancouver, BC Canada **1.800.887.4708**  
[www.structawire.com](http://www.structawire.com)

KCCI-002-02-03 PRI-CMT Accreditations: IAS TL-189; Miami-Dade 14-1215.01; State of Florida TST5878; CRRC

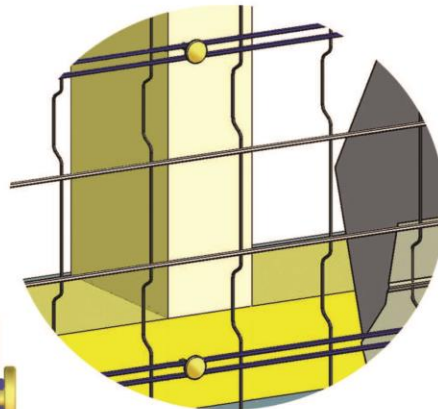
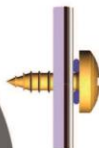
The test results, opinions, or interpretations are based on the material supplied by the client. This report is for the exclusive use of stated client. No reproduction or facsimile in any form can be made without the client's permission. This report shall not be reproduced except in full without the written approval of this laboratory. PRI Construction Materials Technologies LLC assumes no responsibility nor makes a performance or warranty statement for this material or products and processes containing this material in connection with this report.



TWIN TRAC Cold Rolled for Metal or Wood Studs  
#17ga x 1 1/2 SF CR TT



FOR STEEL STUD



FOR WOOD STUD

KCCI-002-02-03 PRI-CMT Accreditations: IAS TL-189; Miami-Dade 14-1215.01; State of Florida TST5878; CRRC

The test results, opinions, or interpretations are based on the material supplied by the client. This report is for the exclusive use of stated client. No reproduction or facsimile in any form can be made without the client's permission. This report shall not be reproduced except in full without the written approval of this laboratory. PRI Construction Materials Technologies LLC assumes no responsibility nor makes a performance or warranty statement for this material or products and processes containing this material in connection with this report.



## Technical Data Guide

7 | 07 92 00  
Joint  
Sealants

# MasterSeal® NP 150

Low-modulus, non-sag, elastomeric, hybrid sealant

FORMERLY SONOLASTIC® 150 VLM

#### PACKAGING

- 300 ml (10.1 fl oz) cartridges, 30 cartridges per carton
- 20 oz (590 ml) ProPaks, 20 per carton

#### COLORS

White, Stone, Limestone, Black, Medium Bronze, Aluminum Gray, Tan, Off-White, Special Bronze, Precast White, Champagne

#### YIELD

See page 3 for charts

#### STORAGE

Store in original, unopened containers in a cool, dry area. Protect unopened containers from heat and direct sunlight. Storing at elevated temperatures will reduce shelf life.

#### SHELF LIFE

15 months when properly stored

#### VOC CONTENT

13.6 g/L  
less water and exempt solvents

#### DESCRIPTION

MasterSeal NP 150 is a high performance, very low-modulus, high-movement, non-sag, fast-curing, hybrid sealant.

#### PRODUCT HIGHLIGHTS

- Superior adhesion results in a long-lasting bond, helping to reduce call backs
- Low modulus to accommodate for joint movement (100% extension in EIFS joints with little stress on bond line)
- Can be painted with elastomeric coatings soon after installation
- Easy to gun and tool, speeding up application
- Wide temperature application range
- Weather resistant for long-lasting weathertight seals
- Fast curing helps to speed up jobsite production
- Non-staining formula for use on stone and other sensitive substrates
- Available in ProPaks to reduce jobsite waste and lower disposal costs
- Meets all state and federal VOC regulations

#### SUBSTRATES

- EIFS
- Stucco
- Aluminum
- Concrete
- Masonry
- Wood
- Stone
- Metal
- Vinyl
- Fiber cement siding

#### APPLICATIONS

- Vertical or horizontal
- Exterior or interior
- Above grade
- Joints with high movement
- In place of silicone sealants
- Store front systems
- Expansion joints
- Panel walls
- Precast units
- Aluminum, vinyl and wood window frames
- Fascia
- Parapets
- Sanitary applications

#### HOW TO APPLY

##### JOINT PREPARATION

1. The product may be used in sealant joints designed in accordance with SWR Institute's Sealants - The Professional's Guide.
2. In optimal conditions, the depth of the sealant should be  $\frac{1}{2}$  the width of the joint. The sealant joint depth (measured at the center) should always fall between the maximum depth of  $\frac{1}{2}$ " and the minimum depth of  $\frac{1}{4}$ ". Refer to Table 1.

Master Builders Solutions by BASF  
[www.buildingsystems.basf.com](http://www.buildingsystems.basf.com)

**MASTER®**  
**» BUILDERS**  
SOLUTIONS

KCCI-002-02-03 PRI-CMT Accreditations: IAS TL-189; Miami-Dade 14-1215.01; State of Florida TST5878; CRRC

The test results, opinions, or interpretations are based on the material supplied by the client. This report is for the exclusive use of stated client. No reproduction or facsimile in any form can be made without the client's permission. This report shall not be reproduced except in full without the written approval of this laboratory. PRI Construction Materials Technologies LLC assumes no responsibility nor makes a performance or warranty statement for this material or products and processes containing this material in connection with this report.

Technical Data Guide  
**MasterSeal® NP 150**

**Technical Data**

**Composition**

MasterSeal NP 150 is a formulation based on hybrid polymer.

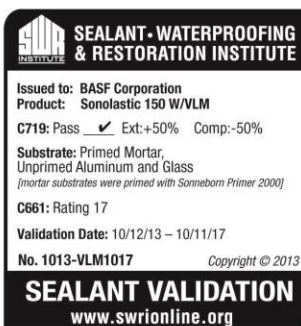
**Compliances**

- ASTM C 920, Type S, Grade NS, Class 50, Use NT, M, A, and O\*  
 -capable of +100/-50% movement under typical field conditions.
- ASTM C 1382 for use with EIFS wall systems at 100% Extension
- Federal Specification TT-S-001543A, Type II, Class A, Type Nonsag
- Federal Specification TT-S-00230C, Type II, Class A
- Corps of Engineers CRD-C-541, Type II, Class A
- CFI accepted
- USDA compliant for use in areas that handle meat and poultry

\*Refer to substrates in Where to Use.

**Typical Properties**

PROPERTY	VALUE
<b>Service temperature range,</b> ° F (° C)	-40 to 180 (-40 to 82)
<b>Shrinkage</b>	None



**SEALANT - WATERPROOFING & RESTORATION INSTITUTE**

Issued to: **BASF Corporation**  
 Product: **Sonolastic 150 W/VLM**  
 C719: Pass ✓ Ext:+50% Comp:-50%

Substrate: Primed Mortar,  
 Unprimed Aluminum and Glass  
*[mortar substrates were primed with Sonneborn Primer 2000]*

C661: Rating 17  
 Validation Date: 10/12/13 – 10/11/17  
 No. 1013-VLM1017 Copyright © 2013

**SEALANT VALIDATION**  
 www.swrionline.org

TABLE 1  
**Joint Width and Sealant Depth**

JOINT WIDTH, IN (MM)	SEALANT DEPTH AT MIDPOINT, IN (MM)
½–¾ (13–19)	¼–⅓ (6–10)
¾–1 (19–25)	⅓–½ (10–13)
1–1½ (25–38)	½ (13)

**Test Data**

PROPERTY	RESULTS	TEST METHOD
<b>Movement capability, %</b>	±50	ASTM C 719
<b>Extention</b>	100%	ASTM C 1382
<b>100% modulus, psi (MPa)</b>	35 (0.24)	ASTM C 412
<b>Tensile strength, psi (MPa)</b>	140–180	ASTM D 412
<b>Tear strength, lb/in (kg/cm)</b>	40 (7.1)	ASTM D 1004
<b>Ultimate elongation at break, %</b>	800–1,000	ASTM D 412
<b>Rheological, (sag in vertical displacement), at 120° F (49° C)</b>	No sag	ASTM C 639
<b>Extrudability, sec</b>	2 – 3	ASTM C 1183
<b>Hardness, Shore A, at standard conditions</b>	17	ASTM C 661
<b>Weight loss, after heat aging, %</b>	< 10	ASTM C 1246
<b>Tack-free time, min (maximum 72 hours)</b>	90	ASTM C 1246
<b>Stain and color change</b>	Passes (no visible stain)	ASTM C 510
<b>Bond durability,* pli on aluminum and concrete, +/- 50% movement</b>	Passes	ASTM C 719
<b>Adhesion* in peel, pli (kg/cm), (minimum 5 pli [0.89 kg/cm])</b>		ASTM C 794
Aluminum	35 (6.2)	
Concrete	36 (6.4)	
<b>Artificial weathering, Xenon arc, 2,000 hrs</b>	No Cracking	ASTM G 155

\*Concrete primed with MasterSeal P 179 for water immersion as indicated in ASTM C 920.  
 Test results are averages obtained under laboratory conditions. Reasonable variations can be expected.

**Yield**

LINEAR FEET PER GALLON\*

JOINT DEPTH, (INCHES)	⅜	½	JOINT WIDTH (INCHES) ⅝
¼	205	154	122
⅜	–	–	82
½	–	–	–

KCCI-002-02-03 PRI-CMT Accreditations: IAS TL-189; Miami-Dade 14-1215.01; State of Florida TST5878; CRRC

The test results, opinions, or interpretations are based on the material supplied by the client. This report is for the exclusive use of stated client. No reproduction or facsimile in any form can be made without the client's permission. This report shall not be reproduced except in full without the written approval of this laboratory. PRI Construction Materials Technologies LLC assumes no responsibility nor makes a performance or warranty statement for this material or products and processes containing this material in connection with this report.

Master Builders Solutions by BASF  
[www.master-builders-solutions.basf.us](http://www.master-builders-solutions.basf.us)

3. In deep joints, the sealant depth must be controlled by closed cell backer rod or soft backer rod. Where the joint depth does not permit the use of backer rod, a bond breaker (polyethylene strip) must be used to prevent three-point bonding.
4. To maintain the recommended sealant depth, install backer rod by compressing and rolling it into the joint channel without stretching it lengthwise. Closed cell backer rod should be about 1/8" (3 mm) larger in diameter than the width of the joint to allow for compression. Soft backer rod should be approximately 25% larger in diameter than the joint width. The sealant does not adhere to it, and no separate bond breaker is required. Do not prime or puncture the backer rod.

#### **SURFACE PREPARATION**

Substrates must be structurally sound, fully cured, dry and clean. Substrates should always be free of the following: dirt, loose particles, oil, grease, asphalt, tar, paint, wax, rust, waterproofing or curing and parting compounds, membrane materials and sealant residue.

#### **EIFS**

1. MasterSeal NP 150 should be applied to the system base coat for best adhesion and to avoid delamination of EIFS finish applied in the joint.
2. Base coat must be sound, well bonded, properly cured and of sufficient depth to comply with manufacturer's specifications.
3. Certain EIFS systems require the use of a primer. Refer to the EIFS manufacturer for recommendations.

#### **CONCRETE, STONE, AND OTHER MASONRY**

Clean by grinding, sandblasting or wire brushing to expose a sound surface free of contamination and laitance.

#### **WOOD**

New and weathered wood must be clean, dry and sound. Scrape away loose paint to bare wood. Any coatings on wood must be tested to verify adhesion of sealant or to determine an appropriate primer.

#### **METAL**

Remove scale, rust and loose coatings from metal to expose a bright white surface. Any coatings on metal must be tested to verify adhesion of sealant or to determine an appropriate primer.

#### **PRIMING**

1. MasterSeal NP 150 is generally a non-priming sealant, but special circumstances or substrates may require a primer.
  - Porous materials subject to intermittent water immersion require priming. Use MasterSeal P 179.
  - Certain architectural metal finishes may require priming with MasterSeal P 173.
  - It is the user's responsibility to check the adhesion of the cured sealant on typical test joints at the project site before and during application. Refer to the technical data guides for MasterSeal P 179 and MasterSeal P 173.
2. Apply primer full strength with a brush or clean cloth. A light, uniform coating is sufficient for most surfaces. Very porous surfaces may require a second coat of MasterSeal P 179; however, do not over apply.
3. Allow primer to dry before applying MasterSeal NP 150. Depending on temperature and humidity, primer will be tack-free in 15–30 minutes. Priming and sealing must be done on the same day.

#### **APPLICATION**

1. MasterSeal NP 150 comes ready to use. Apply using professional grade caulking gun. Do not open cartridges, ProPaks or pails until preparatory work has been completed.
2. Fill joints from the deepest point to the surface by holding an appropriately sized nozzle against the back of the joint.
3. Dry tooling is recommended. Proper tooling results in the correct bead shape, neat joints, and optimal adhesion.

#### **CLEAN UP**

1. Immediately after use, clean equipment with MasterSeal 990 or xylene. Use proper precautions when handling solvents.
2. Remove cured sealant by cutting with a sharp-edged tool.
3. Remove thin films by abrading.

#### **FOR BEST PERFORMANCE**

- In cold weather, store container at room temperature for at least 24 hours before using.
- Not for use in glazing applications. Do not apply on glass and plastic glazing panels.
- For proper sealing of joint edges, all window covers must be removed prior to application of sealant.
- Do not allow uncured MasterSeal NP 150 to come into contact with alcohol-based materials or solvents.
- MasterSeal NP 150 should not be applied adjacent to other uncured sealants and certain petroleum based products.
- MasterSeal NP 150 can adhere to other residual sealants in restoration applications. For best results, always clean the joint as advised in the Surface Preparation section of this data guide. A product field adhesion test for MasterSeal NP 150 within the specific application is always recommended to confirm adhesion and suitability of the application.
- MasterSeal NP 150 should not be used for continuous immersion in water. Contact Technical Service for recommendations.
- Do not apply over freshly treated wood. Allow six months for weathering.
- Do not use MasterSeal P 179 on nonporous surfaces such as aluminum, steel, vinyl or Kynar 500 based paints. Use MasterSeal P 173 on coated metals when testing dictates.
- Lower temperatures and humidity will extend curing times.
- MasterSeal NP 150 can be painted over after a thin film or skin forms on the surface.
- Pursuant to accepted industry standards and practices, using rigid paints and/or coatings over flexible sealants can result in a loss of adhesion of the applied paint and/or coating, due to the potential movement of the sealant. However, should painting and/or coating be desired it is required that the applicator of the paint and/or coating conduct on-site testing to determine compatibility and adhesion.
- Proper application is the responsibility of the user. Field visits by BASF personnel are for the purpose of making technical recommendations only and not for supervising or providing quality control on the jobsite.

KCCI-002-02-03 PRI-CMT Accreditations: IAS TL-189; Miami-Dade 14-1215.01; State of Florida TST5878; CRRC

The test results, opinions, or interpretations are based on the material supplied by the client. This report is for the exclusive use of stated client. No reproduction or facsimile in any form can be made without the client's permission. This report shall not be reproduced except in full without the written approval of this laboratory. PRI Construction Materials Technologies LLC assumes no responsibility nor makes a performance or warranty statement for this material or products and processes containing this material in connection with this report.

Technical Data Guide  
MasterSeal® NP 150

---

**HEALTH, SAFETY AND ENVIRONMENTAL**

Read, understand and follow all Safety Data Sheets and product label information for this product prior to use. The SDS can be obtained by visiting [www.master-builders-solutions.basf.us](http://www.master-builders-solutions.basf.us), e-mailing your request to [basfbcst@basf.com](mailto:basfbcst@basf.com) or calling 1(800)433-9517. Use only as directed.

**For medical emergencies only,  
call ChemTrec® 1(800) 424-9300.**

---

**LIMITED WARRANTY NOTICE**

BASF warrants this product to be free from manufacturing defects and to meet the technical properties on the current Technical Data Guide, if used as directed within shelf life. Satisfactory results depend not only on quality products but also upon many factors beyond our control. BASF MAKES NO OTHER WARRANTY OR GUARANTEE, EXPRESS OR IMPLIED, INCLUDING WARRANTIES OF MERCHANTABILITY OR FITNESS FOR A PARTICULAR PURPOSE WITH RESPECT TO ITS PRODUCTS. The sole and exclusive remedy of Purchaser for any claim concerning this product, including but not limited to, claims alleging breach of warranty, negligence, strict liability or otherwise, is the replacement of product or refund of the purchase price, at the sole option of BASF. Any claims concerning this product must be received in writing within one (1) year from the date of shipment and any claims not presented within that period are waived by Purchaser. BASF WILL NOT BE RESPONSIBLE FOR ANY SPECIAL, INCIDENTAL, CONSEQUENTIAL (INCLUDING LOST PROFITS) OR PUNITIVE DAMAGES OF ANY KIND.

Purchaser must determine the suitability of the products for the intended use and assumes all risks and liabilities in connection therewith. This information and all further technical advice are based on BASF's present knowledge and experience. However, BASF assumes no liability for providing such information and advice including the extent to which such information and advice may relate to existing third party intellectual property rights, especially patent rights, nor shall any legal relationship be created by or arise from the provision of such information and advice. BASF reserves the right to make any changes according to technological progress or further developments. The Purchaser of the Product(s) must test the product(s) for suitability for the intended application and purpose before proceeding with a full application of the product(s). Performance of the product described herein should be verified by testing and carried out by qualified experts.

---

**BASF Corporation**  
Construction Systems

889 Valley Park Drive, Shakopee, MN 55379  
[www.master-builders-solutions.basf.us](http://www.master-builders-solutions.basf.us)

**Customer Service** 1(800)433.9517  
**Technical Service** 1(800)243.6739



© 2014 BASF Corporation Form No. 1032309 rev 04/14

KCCI-002-02-03 PRI-CMT Accreditations: IAS TL-189; Miami-Dade 14-1215.01; State of Florida TST5878; CRRC

The test results, opinions, or interpretations are based on the material supplied by the client. This report is for the exclusive use of stated client. No reproduction or facsimile in any form can be made without the client's permission. This report shall not be reproduced except in full without the written approval of this laboratory. PRI Construction Materials Technologies LLC assumes no responsibility nor makes a performance or warranty statement for this material or products and processes containing this material in connection with this report.

# DuPont™ Tyvek® HomeWrap®

## PHYSICAL PROPERTIES DATA SHEET

PROPERTIES	METHOD	DUPONT™ TYVEK® HOMEWRAP®
Air Penetration Resistance	ASTM E2178 (cfm/ft <sup>2</sup> @1.57 psf)	< .004
	Gurley Hill (TAPPI T-460) (sec/100cc)	1200
	ASTM E1677	Type 1
Water Vapor Transmission	ASTM E96-05 Method A (g/m <sup>2</sup> -24 hrs) (perms)	400 56
	Method B (g/m <sup>2</sup> -24 hrs) (perms)	370 54
Water Penetration Resistance	ATCC 127 (cm)	250
Basis Weight	TAPPI T-410 (oz/yd <sup>2</sup> )	1.8
Breaking Strength	ASTM D882 (lbs/in)	30/30
Tear Resistance (Trapezoid)	ASTM D1117 (lbs)	8/6
Surface Burning Characteristics	ASTM E84 Flame Spread Index	15 Class A
	Smoke Developed Index	15 Class A
Ultra Violet Light Exposure (UV)		120 days (4 months)

Test results shown represent roll averages. Individual results may vary either above or below averages due to normal manufacturing variations, while continuing to meet product specifications.

For more information about DuPont™ Tyvek® Weatherization Systems, please call 1-800-44-Tyvek or visit us at [www.Construction.Tyvek.com](http://www.Construction.Tyvek.com)

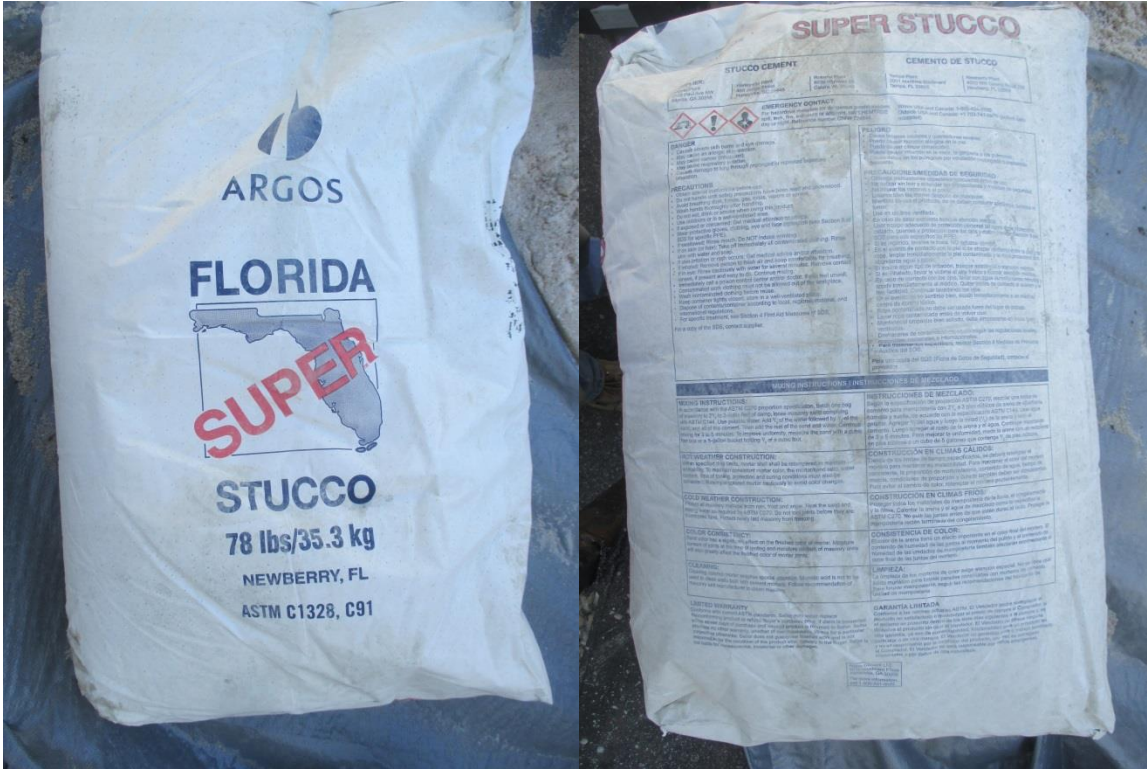
**WARNING:** DuPont™ Tyvek® is combustible and should be protected from an open flame and other high heat sources. If the temperature of DuPont™ Tyvek® reaches 750 °F (400 °C), it will burn and the fire may spread and fall away from the point of ignition.



Copyright © 2007 E.I. du Pont de Nemours and Company. All rights reserved. The DuPont Oval Logo, DuPont™, The miracles of science™, Tyvek® and HomeWrap® are registered trademarks or trademarks of E.I. du Pont de Nemours and Company or its affiliates. K-05031 01/08

KCCI-002-02-03 PRI-CMT Accreditations: IAS TL-189; Miami-Dade 14-1215.01; State of Florida TST5878; CRRC

The test results, opinions, or interpretations are based on the material supplied by the client. This report is for the exclusive use of stated client. No reproduction or facsimile in any form can be made without the client's permission. This report shall not be reproduced except in full without the written approval of this laboratory. PRI Construction Materials Technologies LLC assumes no responsibility nor makes a performance or warranty statement for this material or products and processes containing this material in connection with this report.



KCCI-002-02-03 PRI-CMT Accreditations: IAS TL-189; Miami-Dade 14-1215.01; State of Florida TST5878; CRRC

The test results, opinions, or interpretations are based on the material supplied by the client. This report is for the exclusive use of stated client. No reproduction or facsimile in any form can be made without the client's permission. This report shall not be reproduced except in full without the written approval of this laboratory. PRI Construction Materials Technologies LLC assumes no responsibility nor makes a performance or warranty statement for this material or products and processes containing this material in connection with this report.